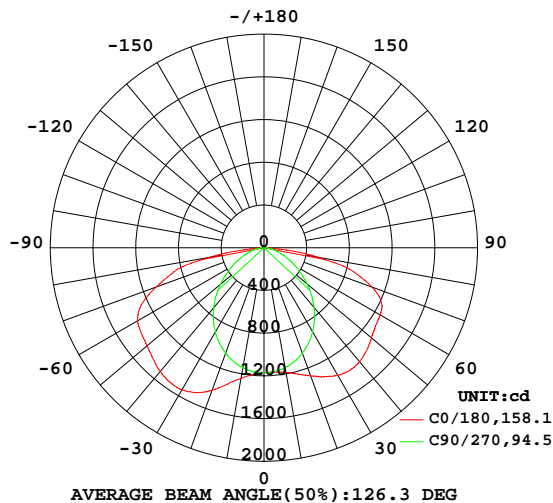


LUMINAIRE PHOTOMETRIC TEST REPORT

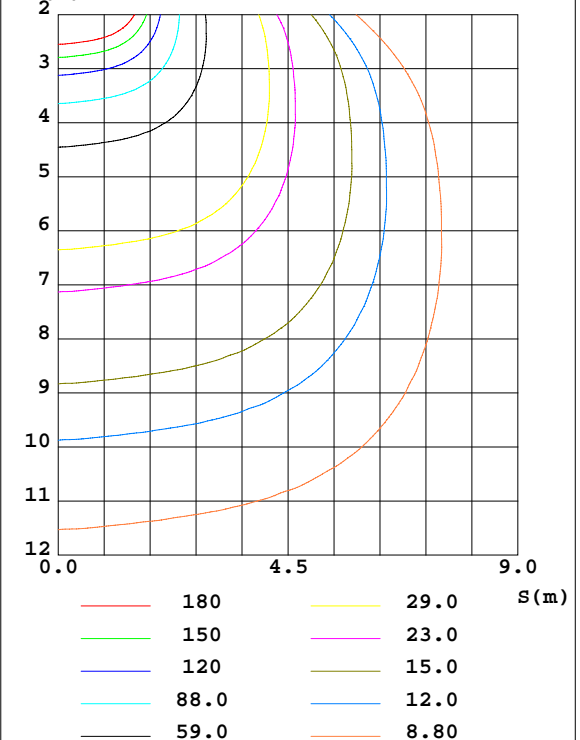
Test:U:229.68V I:0.2532A P:57.794W PF:0.9939 Freq:49.99Hz Lamp Flux:5121.38x1 lm		
NAME:	TYPE:	WEIGHT:
SPEC.:	DIM.: 1650*48*77	SERIAL No.:
MFR.:	SUR.:1.2*0.021	Shielding Angle:

DATA OF LAMP		PHOTOMETRIC DATA Eff: 88.61 lm/W			
MODEL		Imax(cd)	1542	S/MH(C0/180)	1.87
NOMINAL POWER(W)	60	LOR(%)	100.0	S/MH(C90/270)	1.17
RATED VOLTAGE(V)	230.0	TOTAL FLUX(lm)	5121.4	η UP,DN(C0-180)	0.0,49.8
NOMINAL FLUX(lm)	5121.38	CIE CLASS	DIRECT	η UP,DN(C180-360)	0.0,50.2
LAMPS INSIDE	1	η up(%)	0.0	CIBSE SHR NOM	1.50
TEST VOLTAGE(V)	230.0	η down(%)	100.0	CIBSE SHR MAX	1.55

LUMINOUS INTENSITY DISTRIBUTION DIAGRAM



C0 PLANE ISOLUX DIAGRAM (UNIT:lx)



C Range: 0 - 360DEG
C Interval: 22.5DEG
Test Speed: HIGH
Temperature:25.3DEG
Operators:
Test Date:2025-09-29

γ Range: 0 - 90DEG
 γ Interval: 1.0DEG
Test System:EVERFINE GO-2000A_V1 SYSTEM V2.0.406.10
Humidity:65.0%
Test Distance:11.700m [K=1.0000]
Remarks:

ZONAL FLUX DIAGRAM

ZONAL FLUX DIAGRAM:

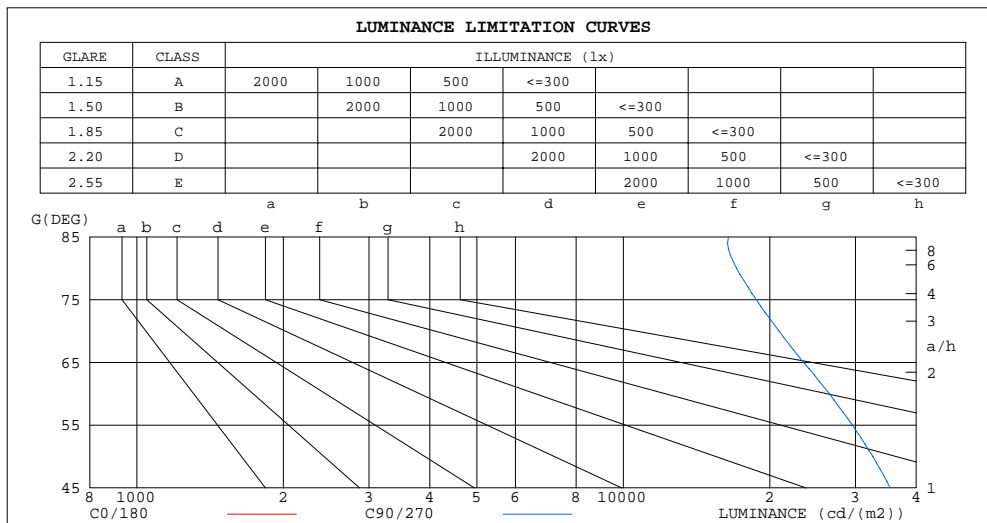
γ	C0	C45	C90	C135	C180	C225	C270	C315	γ	Φ zone	Φ total	$\%lum, lamp$
10	1187	1160	1140	1194	1244	1193	1142	1160	0- 10	112.1	112.1	2.19,2.19
20	1277	1161	1051	1238	1420	1235	1051	1163	10- 20	336.9	448.9	8.77,8.77
30	1380	1169	909.4	1299	1538	1295	912.0	1172	20- 30	558.4	1007	19.7,19.7
40	1392	1165	729.5	1316	1510	1306	731.2	1171	30- 40	743.8	1751	34.2,34.2
50	1315	1113	527.7	1239	1430	1230	532.8	1116	40- 50	851.6	2603	50.8,50.8
60	1257	987.0	334.0	1088	1367	1078	340.6	984.8	50- 60	872.8	3475	67.9,67.9
70	1073	806.8	180.0	898.0	1075	888.3	185.3	808.1	60- 70	815.4	4291	83.8,83.8
80	513.7	583.1	74.75	613.4	522.9	618.9	76.49	591.1	70- 80	619.6	4910	95.9,95.9
90	11.19	19.65	8.110	43.33	12.65	39.18	8.179	15.27	80- 90	210.9	5121	100,100
100									90-100			
110									100-110			
120									110-120			
130									120-130			
140									130-140			
150									140-150			
160									150-160			
170									160-170			
180									170-180			
DEG	LUMINOUS INTENSITY:cd									UNIT:lm		

C Range: 0 - 360DEG
C Interval: 22.5DEG
Test Speed: HIGH
Temperature:25.3DEG
Operators:
Test Date:2025-09-29

γ Range: 0 - 90DEG
 γ Interval: 1.0DEG
Test System:EVERFINE GO-2000A_V1 SYSTEM V2.0.406.10
Humidity:65.0%
Test Distance:11.700m [K=1.0000]
Remarks:

LUMINANCE LIMITATION CURVES

Test:U:229.68V I:0.2532A P:57.794W PF:0.9939 Freq:49.99Hz Lamp Flux:5121.38x1 lm		
NAME:	TYPE:	WEIGHT:
SPEC.:	DIM.: 1650*48*77	SERIAL No.:
MFR.:	SUR.:1.2*0.021	Shielding Angle:



LUMINANCE cd/(m2)		
G(DEG)	C0/180	C90/270
85	64505	16459
80	117403	17082
75	133187	18761
70	124497	20890
65	113851	23449
60	99773	26512
55	88312	29575
50	81195	32578
45	76238	35376

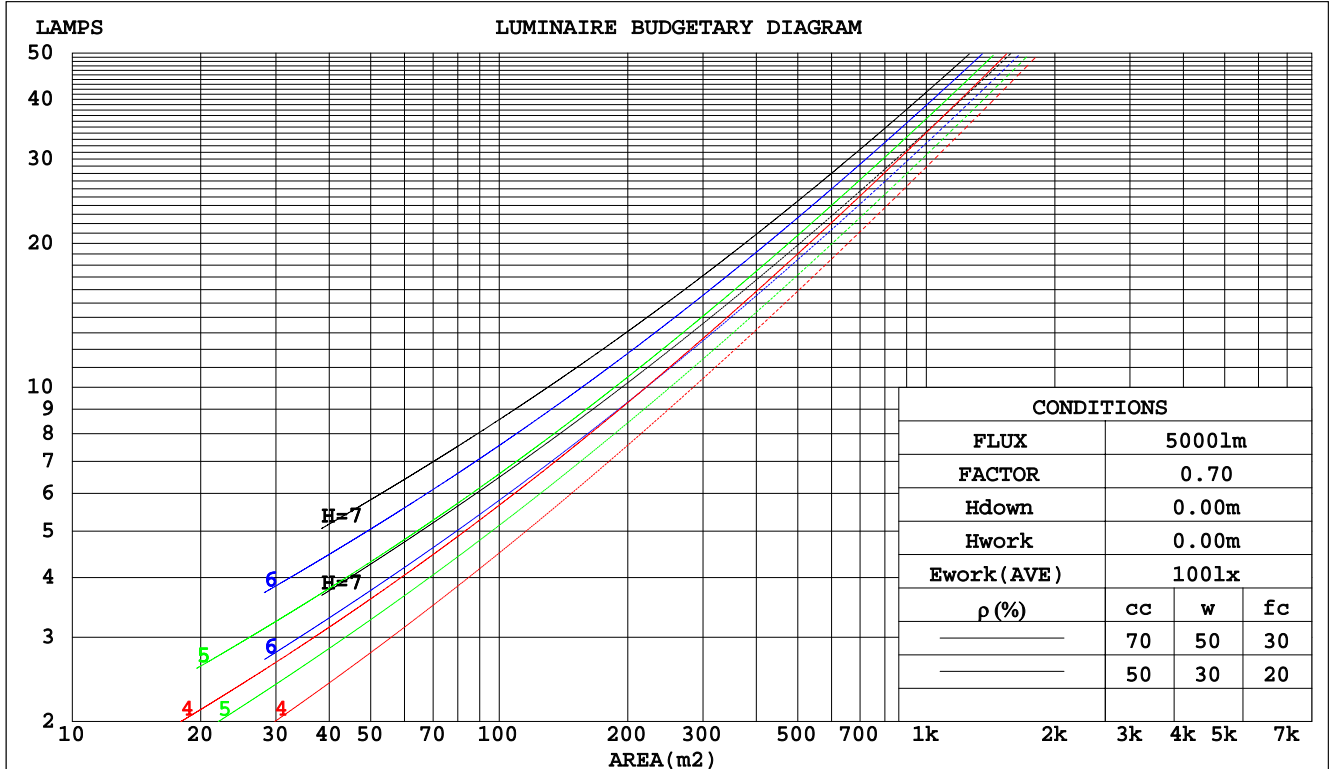
C Range: 0 - 360DEG
C Interval: 22.5DEG
Test Speed: HIGH
Temperature:25.3DEG
Operators:
Test Date:2025-09-29

γ Range: 0 - 90DEG
γ Interval: 1.0DEG
Test System:EVERFINE GO-2000A_V1 SYSTEM V2.0.406.10
Humidity:65.0%
Test Distance:11.700m [K=1.0000]
Remarks:

CU AND LUMINAIRE BUDGETARY ESTIMATE DIAGRAM

Test:U:229.68V I:0.2532A P:57.794W PF:0.9939 Freq:49.99Hz Lamp Flux:5121.38x1 lm		
NAME:	TYPE:	WEIGHT:
SPEC.:	DIM.: 1650*48*77	SERIAL No.:
MFR.:	SUR.:1.2*0.021	Shielding Angle:

pcc	80%			70%			50%			30%			10%			0
pw	50%	30%	10%	50%	30%	10%	50%	30%	10%	50%	30%	10%	50%	30%	10%	0
pfc	20%			20%			20%			20%			20%			0
RCR	RCR:Room Cavity Ratio															



C Range: 0 - 360DEG
C Interval: 22.5DEG
Test Speed: HIGH
Temperature:25.3DEG
Operators:
Test Date:2025-09-29

γ Range: 0 - 90DEG
γ Interval: 1.0DEG
Test System:EVERFINE GO-2000A_V1 SYSTEM V2.0.406.10
Humidity:65.0%
Test Distance:11.700m [K=1.0000]
Remarks:

WEC AND CCEC

Test:U:229.68V I:0.2532A P:57.794W PF:0.9939 Freq:49.99Hz Lamp Flux:5121.38x1 lm								
NAME:			TYPE:			WEIGHT:		
SPEC.:			DIM.: 1650*48*77			SERIAL No.:		
MFR.:			SUR.:1.2*0.021			Shielding Angle:		

pcc	80%			70%			50%			30%			10%			0
pw	50%	30%	10%	50%	30%	10%	50%	30%	10%	50%	30%	10%	50%	30%	10%	0
pfc	20%			20%			20%			20%			20%			0
RCR	RCR:Room Cavity Ratio						Wall Exitance Coefficients(WEC)									
0.0																
1.0	.372	.212	.067	.365	.208	.066	.351	.202	.064	.339	.195	.063	.327	.190	.061	
2.0	.338	.185	.057	.332	.183	.056	.320	.178	.055	.309	.173	.054	.298	.169	.053	
3.0	.306	.163	.049	.300	.161	.048	.290	.157	.048	.280	.153	.047	.270	.150	.046	
4.0	.277	.144	.042	.272	.143	.042	.263	.139	.042	.254	.136	.041	.246	.133	.041	
5.0	.253	.129	.037	.249	.128	.037	.240	.125	.037	.232	.122	.036	.225	.120	.036	
6.0	.232	.116	.033	.228	.115	.033	.221	.113	.033	.213	.111	.033	.207	.109	.032	
7.0	.214	.106	.030	.211	.105	.030	.204	.103	.030	.197	.101	.029	.192	.100	.029	
8.0	.199	.097	.027	.195	.096	.027	.189	.095	.027	.184	.093	.027	.178	.092	.027	
9.0	.185	.089	.025	.182	.089	.025	.177	.087	.025	.172	.086	.025	.167	.085	.024	
10.0	.173	.083	.023	.170	.082	.023	.166	.081	.023	.161	.080	.023	.157	.079	.023	

pcc	80%			70%			50%			30%			10%			0	
pw	50%	30%	10%	50%	30%	10%	50%	30%	10%	50%	30%	10%	50%	30%	10%	0	
pfc	20%			20%			20%			20%			20%			0	
RCR	RCR:Room Cavity Ratio						Ceiling Cavity Exitance Coefficients(CCEC)										
0.0	.190	.190	.190	.163	.163	.163	.111	.111	.111	.064	.064	.064	.020	.020	.020		
1.0	.185	.156	.129	.158	.134	.111	.108	.092	.077	.062	.053	.045	.020	.017	.014		
2.0	.178	.132	.092	.153	.113	.080	.105	.078	.056	.060	.046	.033	.019	.015	.011		
3.0	.171	.115	.069	.147	.099	.060	.101	.069	.042	.058	.040	.025	.019	.013	.008		
4.0	.164	.102	.054	.141	.088	.047	.097	.061	.033	.056	.036	.020	.018	.012	.006		
5.0	.156	.091	.044	.134	.079	.038	.092	.055	.027	.053	.032	.016	.017	.011	.005		
6.0	.149	.083	.036	.128	.072	.032	.088	.050	.022	.051	.030	.013	.016	.010	.004		
7.0	.141	.076	.031	.121	.066	.027	.084	.046	.019	.049	.027	.011	.016	.009	.004		
8.0	.134	.071	.027	.116	.061	.024	.080	.043	.017	.047	.025	.010	.015	.008	.003		
9.0	.128	.066	.024	.110	.057	.021	.076	.040	.015	.044	.024	.009	.014	.008	.003		
10.0	.122	.061	.021	.105	.053	.019	.073	.038	.013	.042	.022	.008	.014	.007	.003		

C Range: 0 - 360DEG
 C Interval: 22.5DEG
 Test Speed: HIGH
 Temperature:25.3DEG
 Operators:
 Test Date:2025-09-29

γ Range: 0 - 90DEG
 γ Interval: 1.0DEG
 Test System:EVERFINE GO-2000A_V1 SYSTEM V2.0.406.10
 Humidity:65.0%
 Test Distance:11.700m [K=1.0000]
 Remarks:

UGR(Unified Glare Rating) Table

Test:U:229.68V I:0.2532A P:57.794W PF:0.9939 Freq:49.99Hz Lamp Flux:5121.38x1 lm											
NAME:					TYPE:			WEIGHT:			
SPEC.:					DIM.: 1650*48*77			SERIAL No.:			
MFR.:					SUR.:1.2*0.021			Shielding Angle:			
ceiling/cavity	0.7	0.7	0.5	0.5	0.3	0.7	0.7	0.5	0.5	0.3	
walls	0.5	0.3	0.5	0.3	0.3	0.5	0.3	0.5	0.3	0.3	
working plane	0.2	0.2	0.2	0.2	0.2	0.2	0.2	0.2	0.2	0.2	
Room dimensions		Viewed crosswise					Viewed endwise				
x = 2H y = 2H		29.6	31.2	29.8	31.4	31.7	24.5	26.2	24.8	26.4	26.6
	3H	32.4	34.0	32.7	34.2	34.5	25.4	27.0	25.7	27.2	27.5
	4H	33.7	35.2	34.0	35.4	35.7	25.8	27.3	26.1	27.5	27.8
	6H	34.6	36.0	34.9	36.3	36.6	26.0	27.4	26.3	27.7	28.0
	8H	34.8	36.2	35.2	36.5	36.8	26.1	27.4	26.4	27.7	28.0
	12H	34.9	36.2	35.3	36.5	36.8	26.1	27.4	26.5	27.7	28.0
4H	2H	30.1	31.6	30.4	31.9	32.1	26.8	28.3	27.2	28.6	28.9
	3H	33.3	34.6	33.6	34.9	35.2	28.1	29.4	28.4	29.7	30.0
	4H	34.7	36.0	35.1	36.3	36.6	28.5	29.7	28.9	30.0	30.4
	6H	35.9	36.9	36.3	37.3	37.7	28.8	29.8	29.2	30.2	30.6
	8H	36.2	37.2	36.6	37.6	38.0	28.8	29.9	29.3	30.2	30.6
	12H	36.3	37.2	36.7	37.6	38.0	28.9	29.8	29.3	30.2	30.6
8H	4H	35.1	36.1	35.5	36.5	36.9	30.5	31.5	30.9	31.9	32.2
	6H	36.4	37.3	36.9	37.7	38.1	31.1	32.0	31.6	32.4	32.8
	8H	36.9	37.6	37.3	38.1	38.5	31.3	32.0	31.7	32.5	32.9
	12H	37.1	37.8	37.6	38.2	38.7	31.4	32.0	31.8	32.5	33.0
12H	4H	35.1	36.0	35.5	36.4	36.8	30.8	31.8	31.3	32.2	32.6
	6H	36.5	37.3	37.0	37.7	38.2	31.9	32.6	32.3	33.0	33.5
	8H	37.1	37.7	37.5	38.2	38.7	32.2	32.8	32.7	33.3	33.8
Variations with the observer position at spacings:											
S = 1.0H	+ 0.1 / - 0.1					+ 0.1 / - 0.2					
1.5H	+ 0.1 / - 0.2					+ 0.2 / - 0.3					
2.0H	+ 0.2 / - 0.3					+ 0.4 / - 0.5					

CIE Pub.117, 5121 lm Total Lamp Luminous Flux Corrected ($8\log(F/F_0) = 5.7$)

C Range: 0 - 360DEG
 C Interval: 22.5DEG
 Test Speed: HIGH
 Temperature: 25.3DEG
 Operators:
 Test Date: 2025-09-29

γ Range: 0 - 90DEG
 γ Interval: 1.0DEG
 Test System: EVERFINE GO-2000A_V1 SYSTEM V2.0.406.10
 Humidity: 65.0%
 Test Distance: 11.700m [K=1.0000]
 Remarks:

UTILIZATION FACTORS TABLE

Test:U:229.68V I:0.2532A P:57.794W PF:0.9939 Freq:49.99Hz Lamp Flux:5121.38x1 lm		
NAME:	TYPE:	WEIGHT:
SPEC.:	DIM.: 1650*48*77	SERIAL No.:
MFR.:	SUR.:1.2*0.021	Shielding Angle:

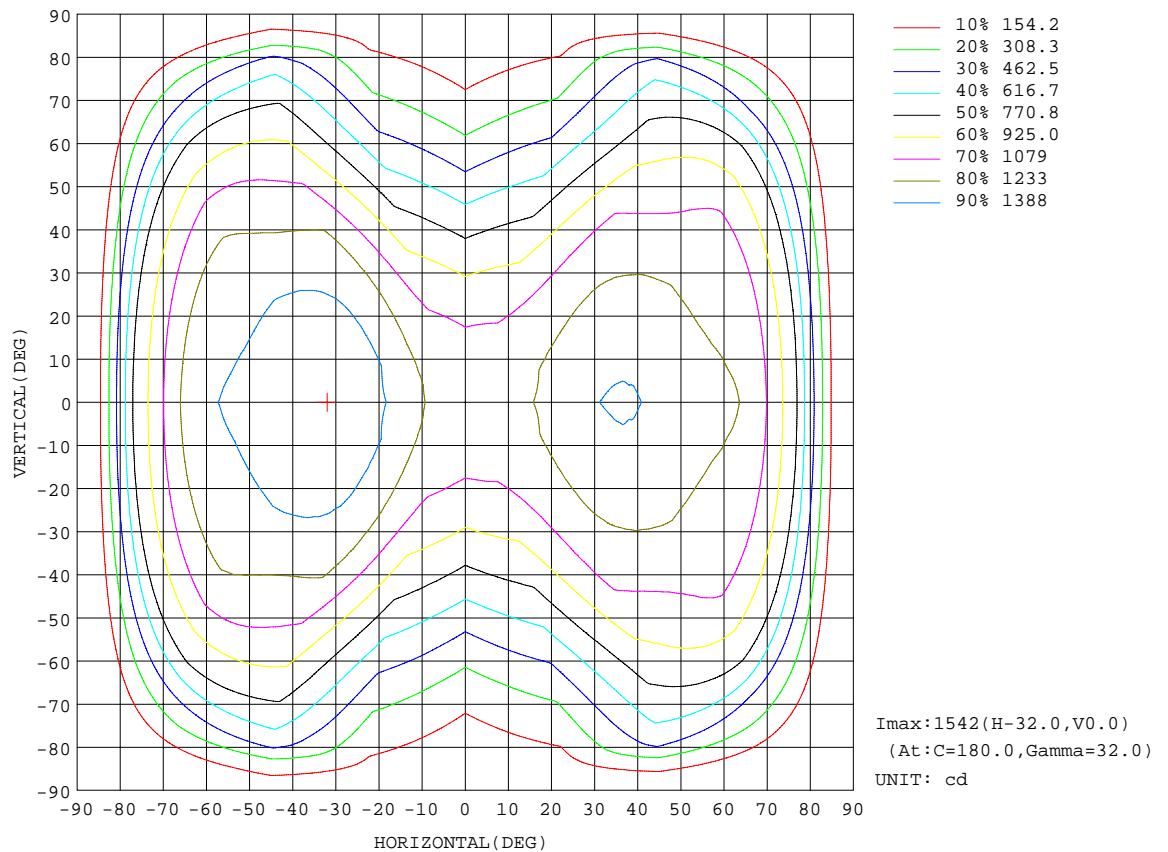
REFLECTANCE										
Ceiling	0.8	0.8	0.8	0.7	0.7	0.7	0.5	0.5	0.5	0
Walls	0.7	0.5	0.3	0.7	0.5	0.3	0.7	0.5	0.3	0
Working plane	0.2	0.2	0.2	0.2	0.2	0.2	0.2	0.2	0.2	0
ROOM INDEX	UTILIZATION FACTORS(PERCENT) $k(RI) \times RCR = 5$									
$k = 0.60$	52	39	32	51	39	32	50	39	31	24
0.80	62	49	41	61	48	40	59	47	40	32
1.00	70	57	49	69	57	49	66	59	48	40
1.25	77	65	57	76	64	57	73	63	56	48
1.50	83	71	63	81	70	62	78	68	61	53
2.00	90	80	72	88	79	72	84	76	70	61
2.50	95	86	78	93	84	77	88	81	76	66
3.00	99	90	84	96	89	83	92	86	81	71
4.00	103	96	91	101	95	89	96	91	87	77
5.00	106	100	95	104	98	94	99	95	91	81
ROOM INDEX	UF(total)									Direct
According to DIN EN 13032-2 2004			Suspended					SHRNOM = 1.25		

C Range: 0 - 360DEG
C Interval: 22.5DEG
Test Speed: HIGH
Temperature:25.3DEG
Operators:
Test Date:2025-09-29

γ Range: 0 - 90DEG
 γ Interval: 1.0DEG
Test System:EVERFINE GO-2000A_V1 SYSTEM V2.0.406.10
Humidity:65.0%
Test Distance:11.700m [K=1.0000]
Remarks:

ISOCANDELA DIAGRAM

Test:U:229.68V I:0.2532A P:57.794W PF:0.9939 Freq:49.99Hz Lamp Flux:5121.38x1 lm		
NAME:	TYPE:	WEIGHT:
SPEC.:	DIM.: 1650*48*77	SERIAL No.:
MFR.:	SUR.:1.2*0.021	Shielding Angle:

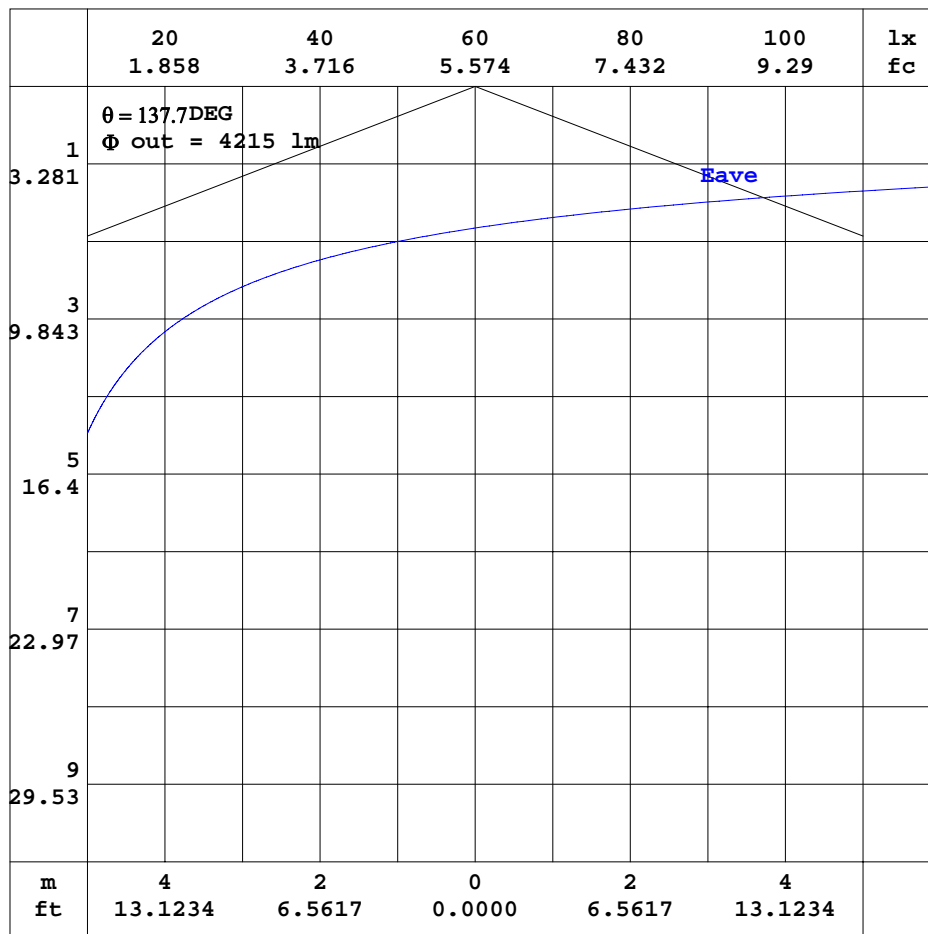


C Range: 0 - 360DEG
C Interval: 22.5DEG
Test Speed: HIGH
Temperature:25.3DEG
Operators:
Test Date:2025-09-29

γ Range: 0 - 90DEG
 γ Interval: 1.0DEG
Test System:EVERFINE GO-2000A_V1 SYSTEM V2.0.406.10
Humidity:65.0%
Test Distance:11.700m [K=1.0000]
Remarks:

AAI CURVES

Test:U:229.68V I:0.2532A P:57.794W PF:0.9939 Freq:49.99Hz Lamp Flux:5121.38x1 lm		
NAME:	TYPE:	WEIGHT:
SPEC.:	DIM.: 1650*48*77	SERIAL No.:
MFR.:	SUR.:1.2*0.021	Shielding Angle:



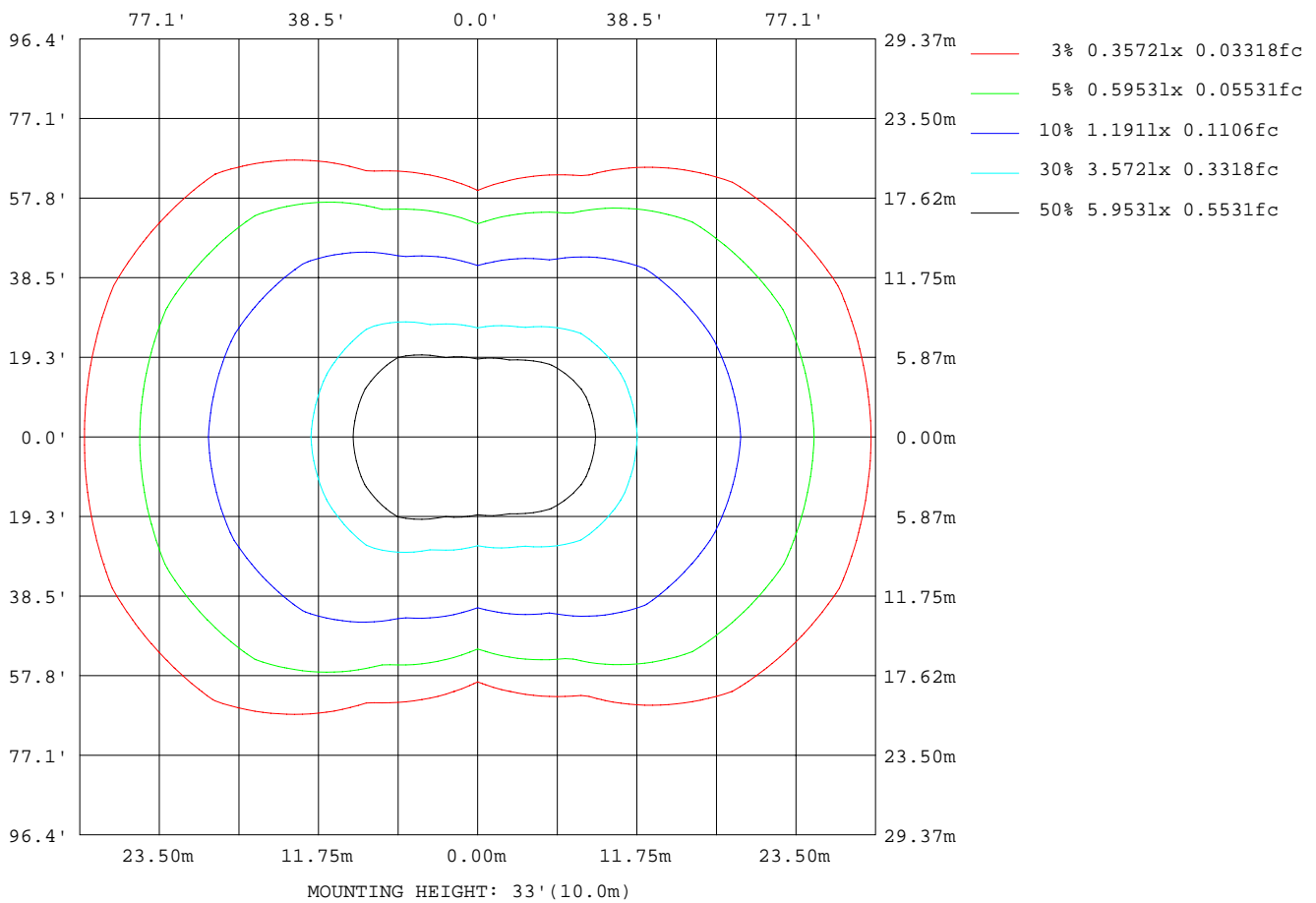
Note: The Curves indicate the illuminated area and the average illumination when the luminaire is at different distance.

C Range: 0 - 360DEG
C Interval: 22.5DEG
Test Speed: HIGH
Temperature: 25.3DEG
Operators:
Test Date: 2025-09-29

γ Range: 0 - 90DEG
 γ Interval: 1.0DEG
 γ Test System: EVERFINE GO-2000A_V1 SYSTEM V2.0.406.10
Humidity: 65.0%
Test Distance: 11.700m [K=1.0000]
Remarks:

ISOLUX DIAGRAM

Test:U:229.68V I:0.2532A P:57.794W PF:0.9939 Freq:49.99Hz Lamp Flux:5121.38x1 lm		
NAME:	TYPE:	WEIGHT:
SPEC.:	DIM.: 1650*48*77	SERIAL No.:
MFR.:	SUR.:1.2*0.021	Shielding Angle:



C Range: 0 - 360DEG
C Interval: 22.5DEG
Test Speed: HIGH
Temperature: 25.3DEG
Operators:
Test Date: 2025-09-29

γ Range: 0 - 90DEG
 γ Interval: 1.0DEG
Test System: EVERFINE GO-2000A_V1 SYSTEM V2.0.406.10
Humidity: 65.0%
Test Distance: 11.700m [K=1.0000]
Remarks:

LED Avg.L Report

Test:U:229.68V I:0.2532A P:57.794W PF:0.9939 Freq:49.99Hz Lamp Flux:5121.38x1 lm		
NAME:	TYPE:	WEIGHT:
SPEC.:	DIM.: 1650*48*77	SERIAL No.:
MFR.:	SUR.:1.2*0.021	Shielding Angle:

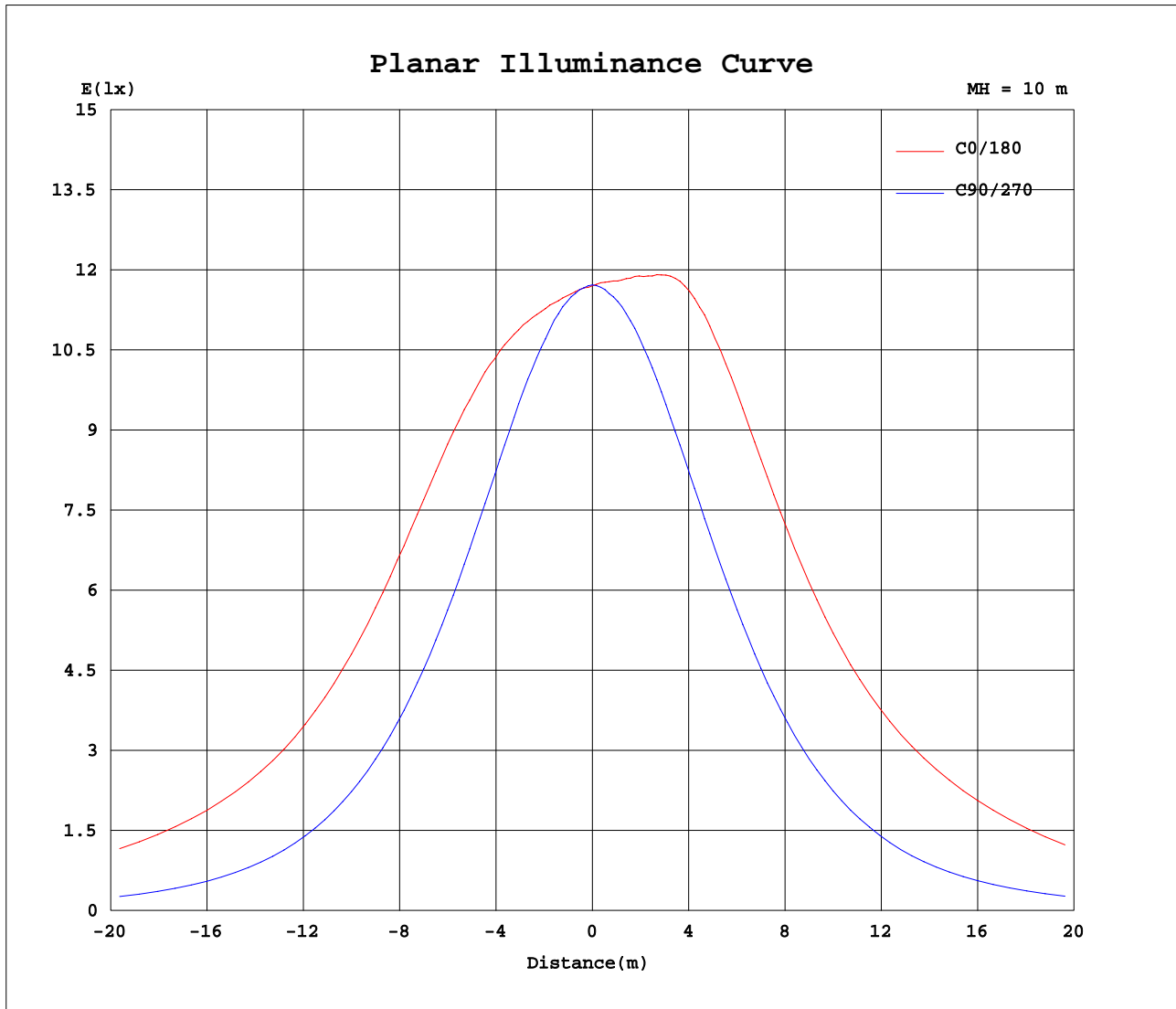
AvgL	cd/m2
L_0~180(65)av	116466
L_0~180(75)av	133417
L_0~180(85)av	60802
L_90~270(65)av	23806
L_90~270(75)av	19016
L_90~270(85)av	16591
L_45(65)av	88771
L_45(75)av	113895
L_45(85)av	130015

Standard: GB/T 29293-2012

C Range: 0 - 360DEG
C Interval: 22.5DEG
Test Speed: HIGH
Temperature:25.3DEG
Operators:
Test Date:2025-09-29

γ Range: 0 - 90DEG
γ Interval: 1.0DEG
Test System:EVERFINE GO-2000A_V1 SYSTEM V2.0.406.10
Humidity:65.0%
Test Distance:11.700m [K=1.0000]
Remarks:

Planar Illuminance Curve



C Range: 0 - 360DEG
C Interval: 22.5DEG
Test Speed: HIGH
Temperature: 25.3DEG
Operators:
Test Date: 2025-09-29

γ Range: 0 - 90DEG
 γ Interval: 1.0DEG
Test System: EVERFINE GO-2000A_V1 SYSTEM V2.0.406.10
Humidity: 65.0%
Test Distance: 11.700m [K=1.0000]
Remarks:

```

γ Range: 0 - 90DEG
γ Interval: 1.0DEG
Test System:EVERFINE GO-2000A_V1 SYSTEM V2.0.406.10
Humidity:65.0%
Test Distance:11.700m [K=1.0000]
Remarks:

```